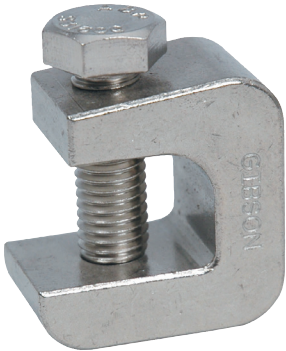
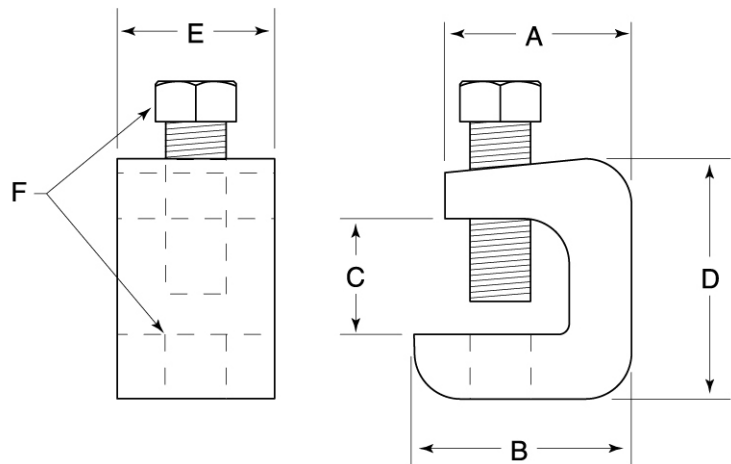
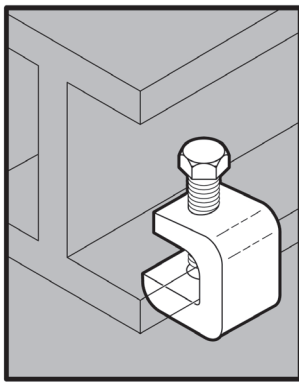


STAINLESS STEEL 2100 SERIES BEAM CLAMPS



APPLICATION

- Similar to 2000 Series Beam Clamps; however are designed without back attachment hole
- Provide a means of attachment to a structural member without having to drill holes
- Manufactured in stainless steel to help prevent corrosion
- Can be installed using ordinary hand tools and require little maintenance or repair
- Provided in a bright, polished finish that does not require touch up or painting



PRODUCT DETAILS

Material:

-Body, Bolt: 316 SS

Standards:

MPIF35, ASTM F593

Country of Origin:

Body 100% Made in USA; bolt may or may not be of U.S. origin

| Part Number | Size | Load Rating* (lbs.) | Weight/ 100 (lbs.) | Dimension (in.) | | | | | |
|-------------|---------|---------------------|--------------------|-----------------|------|------|------|------|--------|
| | | | | A | B | C | D | E | F |
| 2103 | 3/8 in. | 400 | 51 | 1.51 | 1.76 | 0.89 | 1.90 | 1.00 | 3/8-16 |
| 2104 | 1/2 in. | 600 | 55 | 1.51 | 1.76 | 0.89 | 1.90 | 1.00 | 1/2-13 |

* Based on upright installation, as shown from bottom attachment hole.

